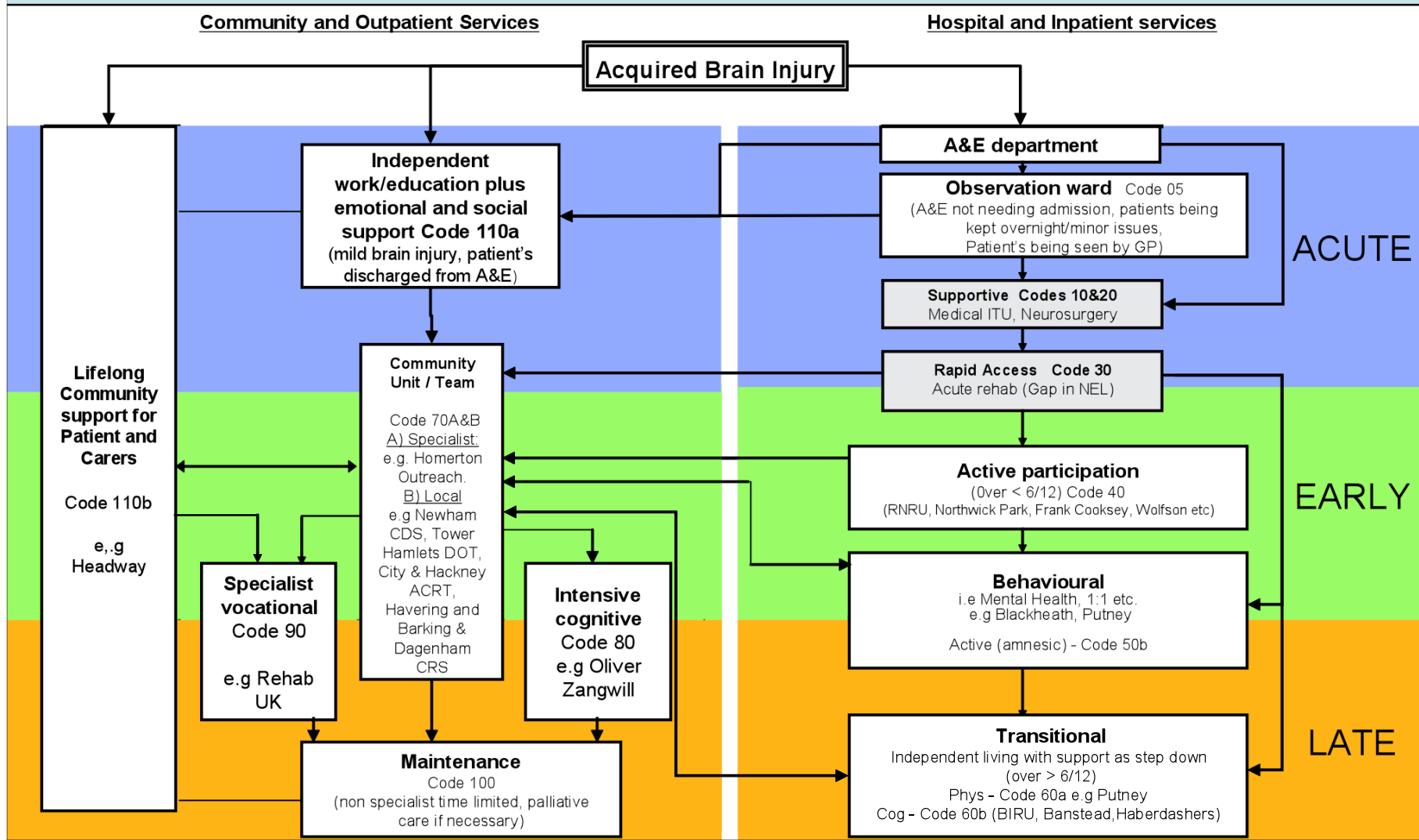


# The ABI Care Pathway and Headway



# REHABILITATION SERVICE MAPPING PATHWAY AFTER BRAIN INJURY IN NORTH EAST LONDON



GPs and social services will be involved in all stages of the pathway, which will be underpinned by the biopsychosocial model of care.

Codes after Pickard JD et al. J Roy Soc Med 2004; 97: 384 – 9; adapted from Dr Richard Greenwood's original template

## Acute & Post Acute Stage



- Information for family members & friends
- Family & carer support
- Guidance and support when transitioning through stages

# Early Rehab Stage



- Signposting
- Family & carer support



# Community Rehab Stage



- Family & carer support
- Headway House
- Outreach Services
- Collaborative Working



# Long Term Support Stage

- Headway House
- Valuing Contributions
- Volunteering
- Outreach Services
- Family & Carer Support

