

**Frank Cooksey**  
**Rehabilitation Unit**  
**ABIL Meeting, 19.9.2007**  
David Rushton



## **Frank Cooksey Rehabilitation Unit Mapother House, King's College Hospital**

- 15-bedded rehabilitation unit
- Mainly neuro-rehabilitation
- Mainly post-acute acquired complex disability
- Off the main acute site (across Denmark Hill)
- Easy access to all investigational facilities
- 3 single rooms, 3-,4- and 5-bed bays
- Specialist medical, nursing, therapy (PT, OT, SLT) and psychology staffing
- Training site for all staff categories

## Criteria

- Medically stable
- Investigations complete, medical management plan in place (usually)
- Able to take part in an intensive programme
- Willing to participate
- Potential functional goals identifiable
- Not appropriate to discharge home from acute unit

## Exclusions

- Medically unstable
- Tracheostomy
- Impaired level of consciousness
- Severe behavioural problems
- Unwilling to take an active role in rehab

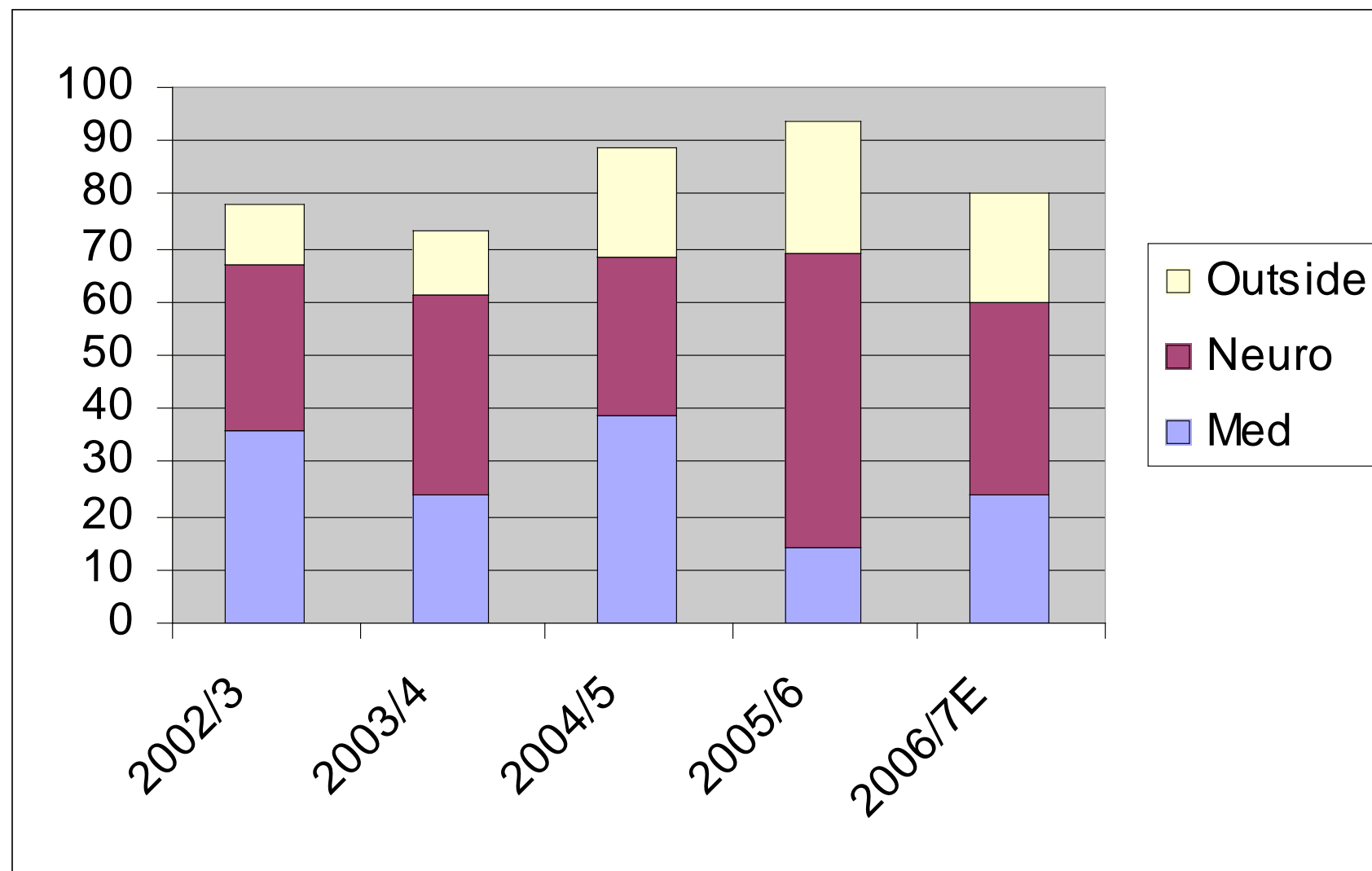
## Procedures

- Multidisciplinary assessment prior to acceptance
- 2-week assessment period is followed by goal-setting, family meeting and setting provisional discharge date
- Allocated keyworker
- Bedside weekly timetable
- One-to-one and group sessions
- Admission and discharge FIM/FAM scoring

## Activity

- Patients' addresses mainly in LSL, BBG
- Referral sources: King's neurosciences and medical; other hospitals, mainly STH, UHL, QEHW, PRHF, QMHS
- Turnover approx. 85-95 discharges pa
- ALOS approx. 8 weeks
- Occupancy approx. 95%

# Admission trends



## Performance

- Average waiting time from acceptance to admission 2 weeks
- Average FIM gain 37 points (2005/6)
- Failed discharges 1-2%