



London Specialised Neuro- rehabilitation

Kellie Blane
20th July 2010


Outline

- Achievements of the Consortia
- Commissioning in a New World
- Priorities for Future

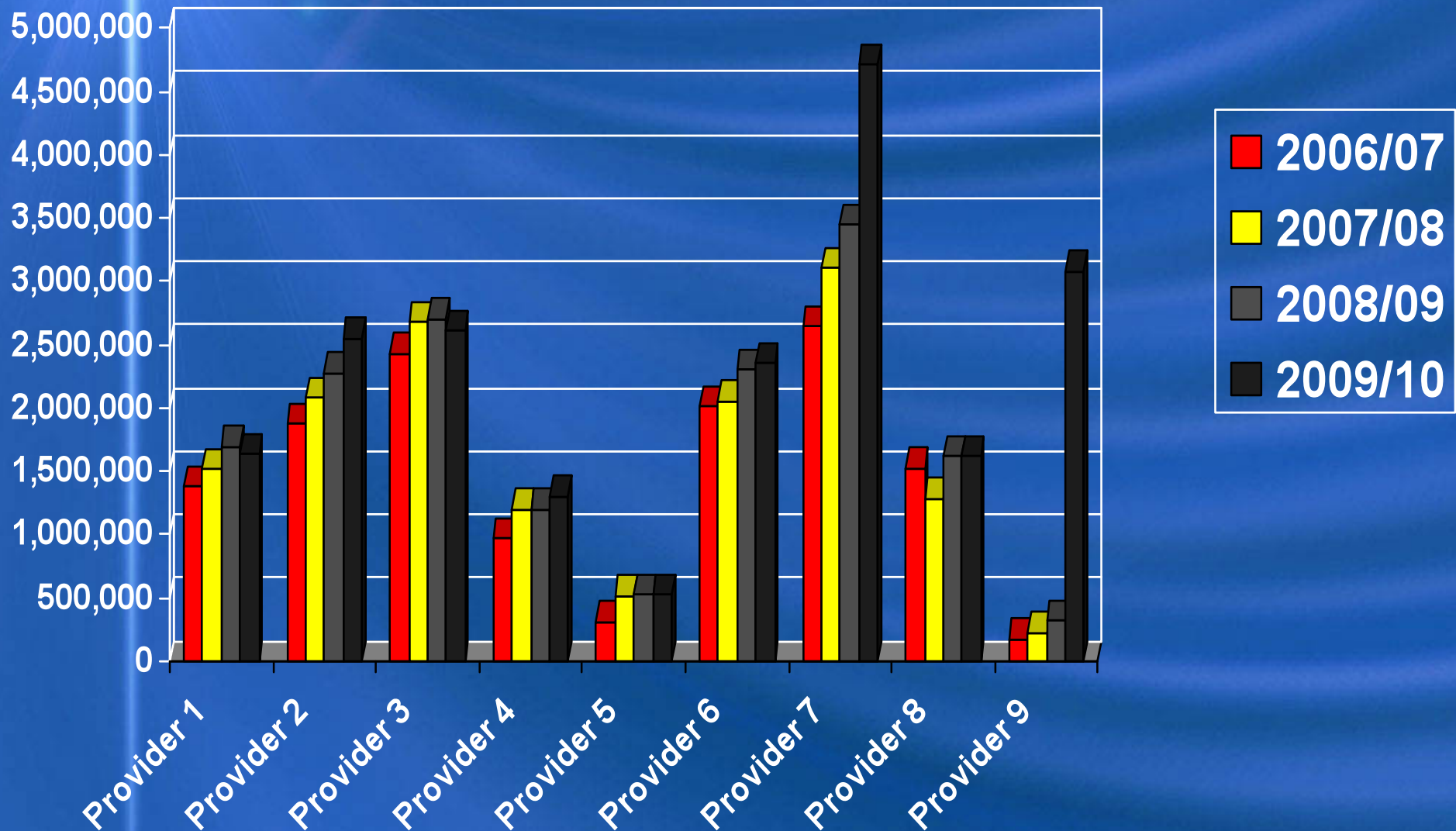
Achievements

- **Uniformed** the commissioning of the service by moving away from primary care trust-level spot purchasing
- **Reduction** in long lengths of stay, releasing funds to PCTs
- **Equitable access** patients can now access any of the nine major tertiary neuro-rehabilitation centres regardless of where they live

- **Focus on quality and outcomes** all patients are treated to the same clinical standards that are in line with the guidelines issued by British society of rehabilitation Medicine and the Royal College of Physicians
- **Outcomes** the consortium collects patient-level complexity and outcome data demonstrating the degree of clinical gain made by each patient over the duration of their rehabilitation programme

- 
- **Innovative network** approach the “network’ approach has been instrumental in driving key achievements, the consortium and the London SCG have acted as a catalyst on creating a spirit of leadership, as recommended in world class commissioning
 - **Elimination** of excessive delayed discharges through the introduction of the trim point
 - **Create a stable Commissioning environment** which enable service providers to plan

Provider Expenditure Over 4 Years

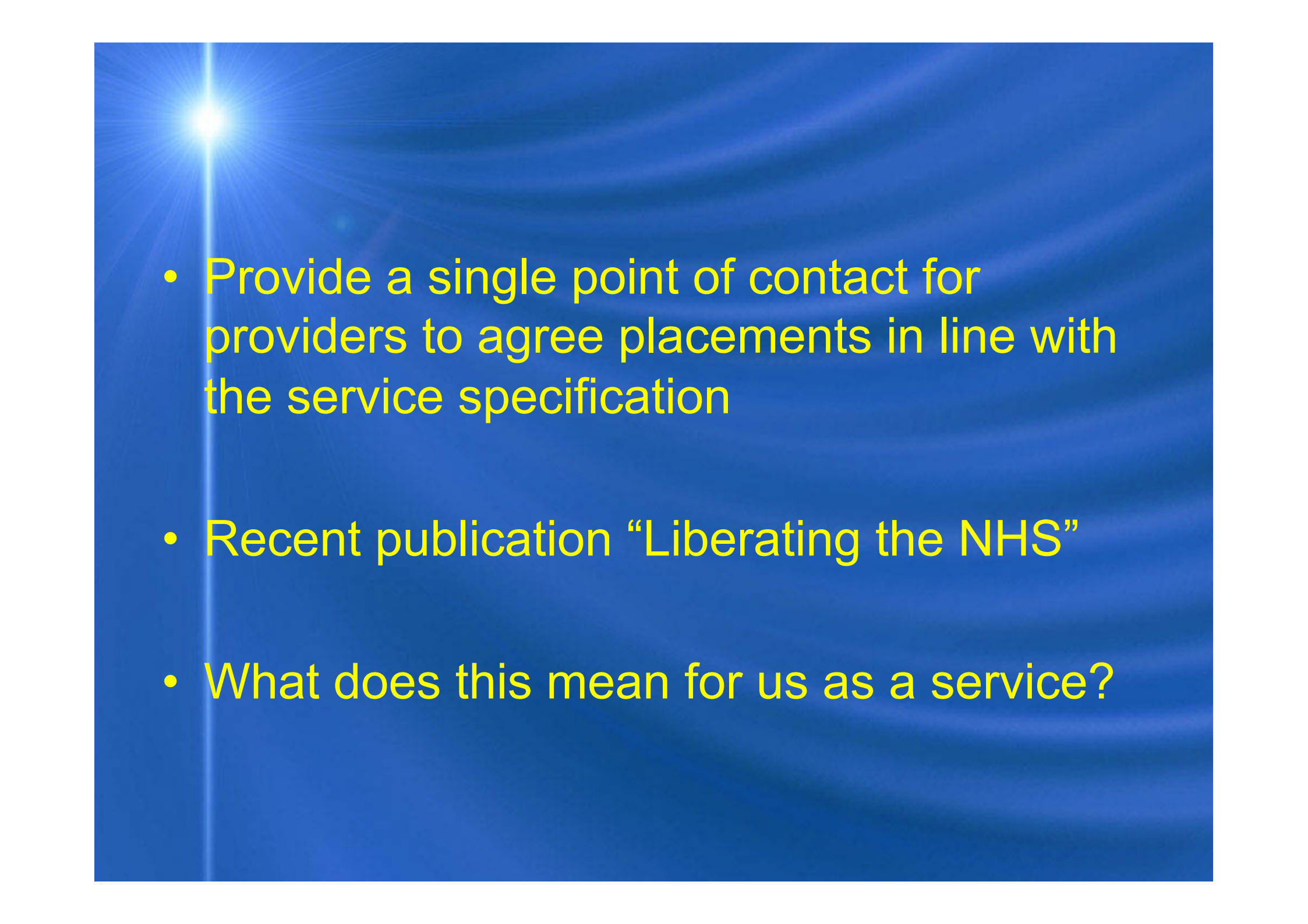


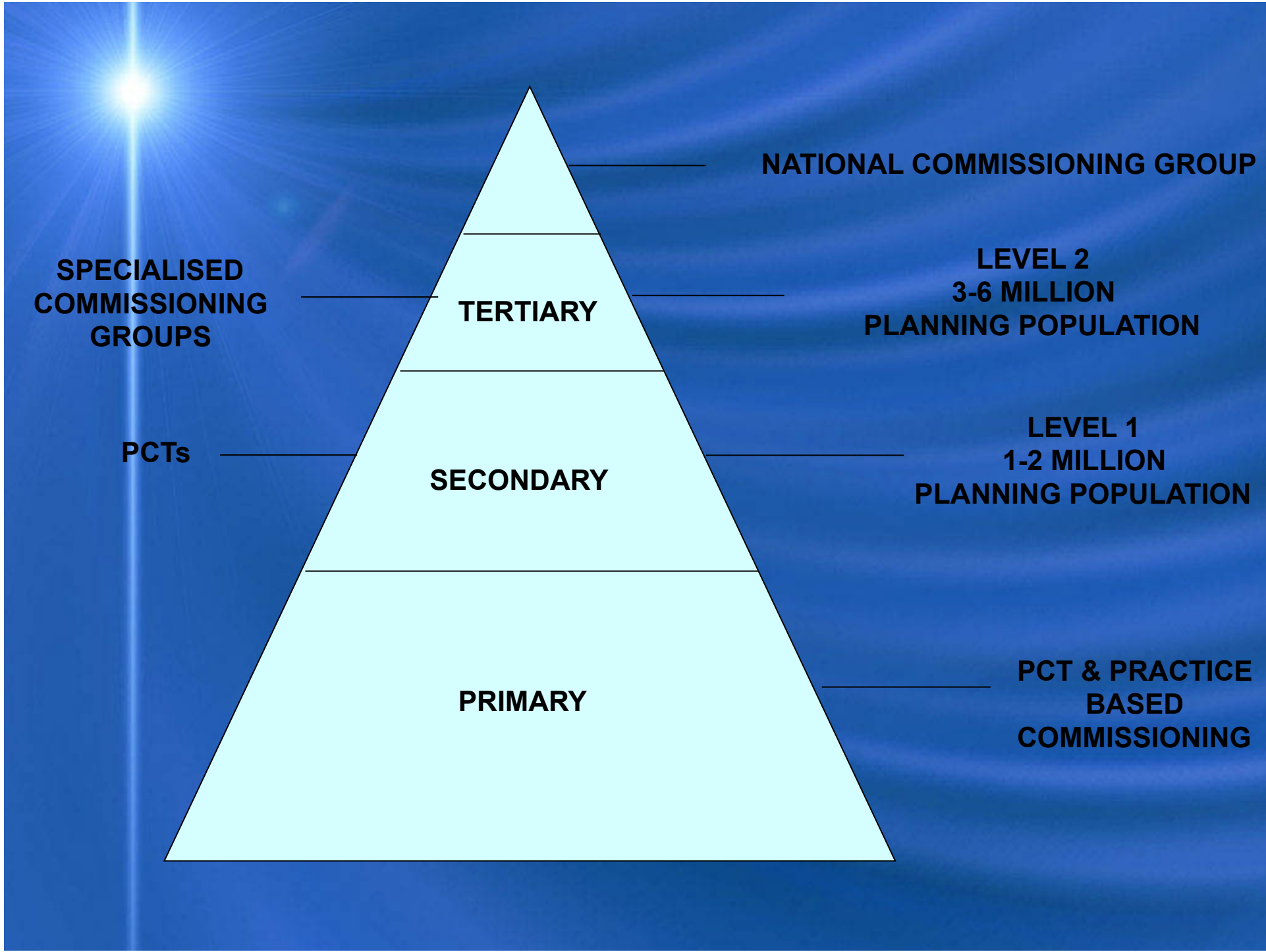
Commissioning in a new world.....



Commissioning in a new world

- Financial pressures in the acute sector and NHS generally
- Significant savings have already been achieved, which has offset cost of growth in previous years
- Provide a stable commissioning environment within which regional decisions can be made and robustly managed, in a climate of economical downturn.

- 
- Provide a single point of contact for providers to agree placements in line with the service specification
 - Recent publication “Liberating the NHS”
 - What does this mean for us as a service?



NATIONAL COMMISSIONING GROUP

LEVEL 2

3-6 MILLION

PLANNING POPULATION

LEVEL 1

1-2 MILLION

PLANNING POPULATION

PCT & PRACTICE

BASED

COMMISSIONING

TERTIARY

SECONDARY

PRIMARY

**SPECIALISED
COMMISSIONING
GROUPS**

PCTs

Understanding the new NHS Commissioning landscape

Government sets out a
vision for the future -
Health Secretary
5 key priorities

- Putting patients at the front of everything we do
- Focussing on outcomes, not process targets, not measuring inputs, but results for patients
- Empowering professionals
- Prioritising public health and preventing ill-health
- Reforming social care to promote further integration within commissioning

Key Commissioning Stakeholders

Current Key Commissioning Stakeholders

1 Strategic Health Authority

1 Specialised Commissioning Group

6 Sector Acute Commissioning Units

31 Primary Care Trusts

32 Local Authorities

9 Providers

PPE

Potential Commissioning stakeholders

1 NHS commissioning Board

1 London Specialised Commissioning Group

1 Regional Office

GP Commissioning Consortia (150)

1546 GP Practices


32 Local Authorities

9 Providers

PPE

Priorities For The Future

- National Designation Programme
- Completion of the needs assessment
- Implementation of revised, consolidated service standards in time for 2011-12 commissioning round
- Development of robust and improved discharge arrangements supported by a central point of coordination

- 
- Provide a single point of contact for providers to agree placements in line with the service specification
 - Provide commissioners with timely, accurate and standardised activity monitoring information
 - Encourage vertical integration of community services
 - Anticipate the needs and wishes of GPs acquiring responsibility for Neuro patients as part of clinical commissioning

- Scoping the implementation of the new specialised services national definition set with a view to implementing the new classification model

NSF for Long-term Conditions Care Pathway

**Sudden onset
Conditions, e.g.
brain injury, SCI**

Timely
Emergency and
Acute management

Early and
specialist rehabilitation

Early recognition
Prompt diagnosis
+ treatment

**Progressive
Conditions e.g.
MS, MND, PD
+ Intermittent
Conditions e.g. epilepsy**

Equipment and
accommodation

Community and vocational rehabilitation

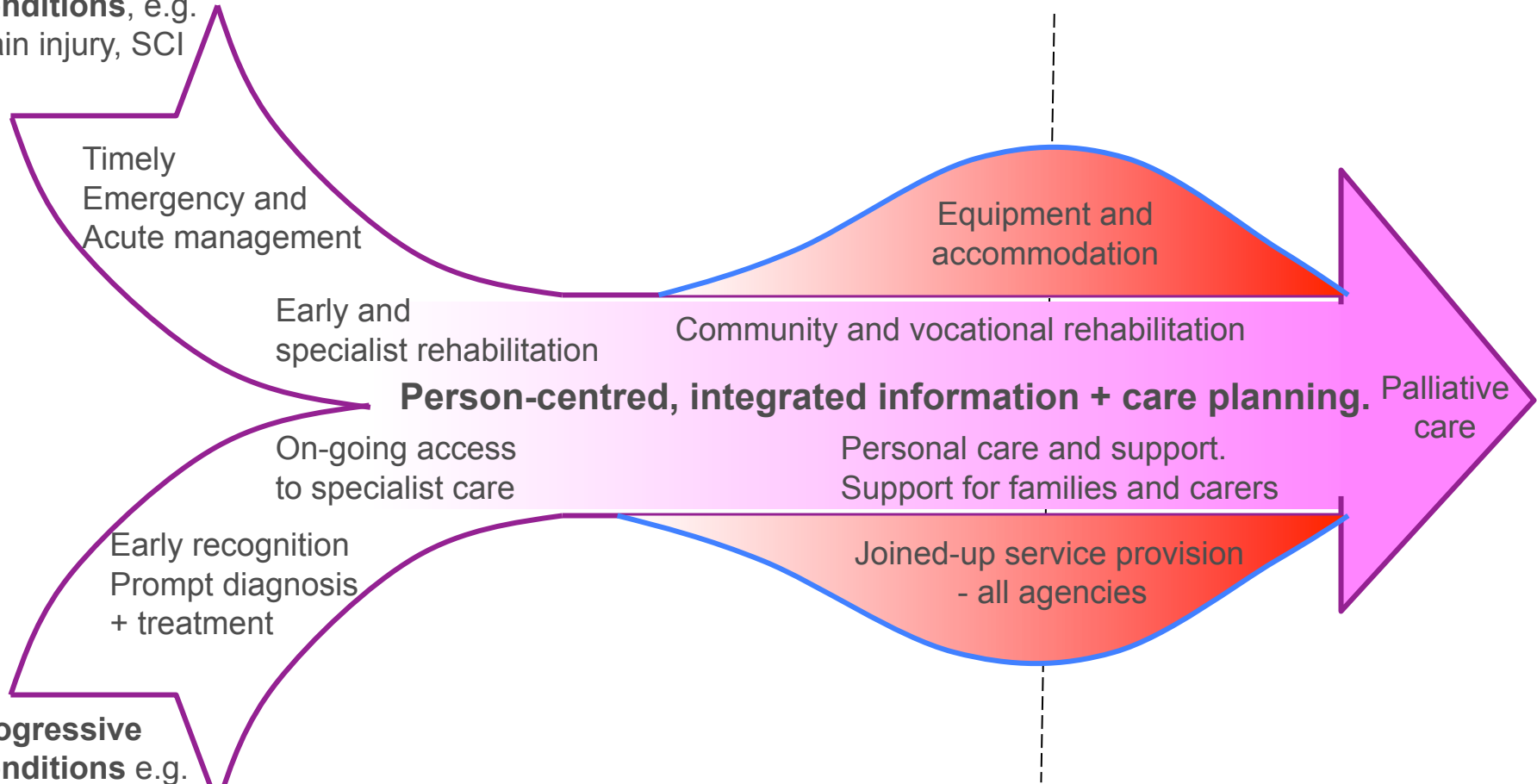
Person-centred, integrated information + care planning.

On-going access
to specialist care

Personal care and support.
Support for families and carers

Joined-up service provision
- all agencies

Palliative
care



As one specialist and Community
Rehabilitation Professional, quoted
in the NSF

“We cant find the commissioners,
and they cant find us”

Long way to go.....

11 NSF Standards

- A person centered service
- Early recognition, prompt diagnosis and treatment
- Emergency and acute management
- Early and specialist rehabilitation
- Community rehabilitation and support
- Vocational rehabilitation
- Providing equipment & accommodation
- Personal care and support
- Palliative care
- Supporting families and carers
- Caring for people with neurological conditions during admission to hospital or other health and social care settings

Contact Details

Kellie Blane

Associate Director of Specialised Commissioning – North
East Sector

0207 869 8644

Kellie.blane@londonscg.nhs.uk